

**Protecting the Right to Discriminate:
The Second Great Migration and Racial Threat in the American West**

Tyler T. Reny
Department of Political Science
University of California, Los Angeles
ttreny@ucla.edu

Benjamin J. Newman
School of Public Policy and
Department of Political Science
University of California, Riverside
bnewman@ucr.edu

Forthcoming at the *American Political Science Review*

ABSTRACT

Taking advantage of a unique event in American history, the Second Great Migration, we explore whether the rapid entry of African Americans into nearly exclusively White contexts triggered “racial threat” in White voting behavior in the state of California. Utilizing historical administrative data, we find that increasing proximity to previously White areas experiencing drastic Black population growth between 1940 to 1960 is associated with significant increases in aggregate White voter support for a highly racially-charged ballot measure, Proposition 14, which legally protected racial discrimination in housing. Importantly, we find that this result holds when restricting the analysis to all-White areas with high rates of residential tenure and low rates of White population growth. These latter findings indicate that this relationship materializes in contexts where a larger share of White voters were present during the treatment and exercised residential-choice before the treatment commenced, which is suggestive of a causal effect.

Keywords: *racial threat, voting behavior, discrimination*

We thank Bryan Wilcox-Archuleta, Matt A. Barreto, APSR’s anonymous reviewers, and participants, panelists, and discussants at the 2018 Western Political Science Association Conference, the Midwest Political Science Association conference, and the UCLA Racial and Ethnic Politics Research Lab for helpful feedback and discussion. We thank Steven Melendez for his assistance with data preparation and processing. Finally, we are grateful for the research support from the UCLA Luskin Center for History and Policy.

A substantial body of research in American politics explores the impact of “racial threat” (Key 1949) on White Americans’ political attitudes and behavior. As summarized in prior scholarship (Enos 2016; Oliver 2010; Cho and Baer 2011; see Appendix A for an expanded review), this literature is beset with conflicting findings, with one of the primary contributing factors being the problem of selection bias. Indeed, this research typically analyzes the impact of the size of geographically proximate racial minority populations on Whites using observational data, limiting causal inference due to concerns over the non-random nature of minority settlement patterns and residential selection among Whites (Clark 1992). Prior scholarship has attempted to assuage these concerns by controlling for self-reported neighborhood racial preferences (Oliver and Wong 2003), performing endogeneity tests (Rocha and Espino 2009), demonstrating that racial orientations are not predictive of respondents’ racial context (Branton and Jones 2005), and using instrumental variables (Acharya et al. 2016). Additionally, scholarship has attempted to bypass this issue altogether by using survey and field experiments (Glaser 2003; Enos 2014). A promising direction taken in recent research is the identification of events where large changes in minority populations occurred and characteristics of the event facilitate causal inference, typically by mitigating concerns about selection bias. Examples include the influx of African American evacuees from New Orleans into neighboring cities following Hurricane Katrina (Hopkins 2012) and the exodus of African American residents from Whites’ neighborhoods following the demolition of public housing in Chicago (Enos 2016).

In this letter, we identify a previously overlooked event in American history that provides useful features for gaining insight on the effect of racial context on White voter behavior. Following the First Great Migration (1910-1930) of African Americans out of the American South to Northeastern cities (Gregory 2005), a second and larger exodus of African Americans

out of the South (1941-1970) resulted in a massive and unprecedented migration to the American West—most notably to the state of California (Wilkerson 2011). Dubbed the Second Great Migration (SGM), this event provides a useful test of racial threat, as African Americans previously constituted an almost non-existent share of the California population. Residential choice among Anglo-Californians prior to the SGM occurred largely in the absence of Black residents, distinguishing this event from the vast majority of existing studies of racial threat where the Whites under study had long-standing contact with African Americans and residential decisions were made with regard to racial demographics (Freund 2007).

We leverage this historical event to evaluate the impact of proximity to areas undergoing rapid demographic change on White voting for Proposition 14, a California ballot proposition in the 1964 election that sought to exempt the real estate industry and homeowners from anti-discrimination laws (HoSang 2010). Applying theories of racial threat, we expect proximity to rapidly diversifying cities to be associated with stronger support among White voters for Proposition 14. Because many Anglo-Californians in the early 1960s made housing decisions before this demographic shock took place, we have increased confidence that the SGM provides a rare test of racial threat that ameliorates concern over selection bias.

THE SECOND GREAT MIGRATION AND PROPOSITION 14

Throughout the early 20th century, the African American population in California was small and concentrated in a handful of census tracts designated specifically for non-Whites. The 1940 decennial census, conducted immediately before the start of the SGM, indicates that African Americans comprised less than 2% of the state population and less than 3% of the population in urban counties that would come to house the largest Black populations. Holding

aside the Black population, the non-Black minority population in California in 1940 was only 2.7%, leaving the state nearly 96% White.

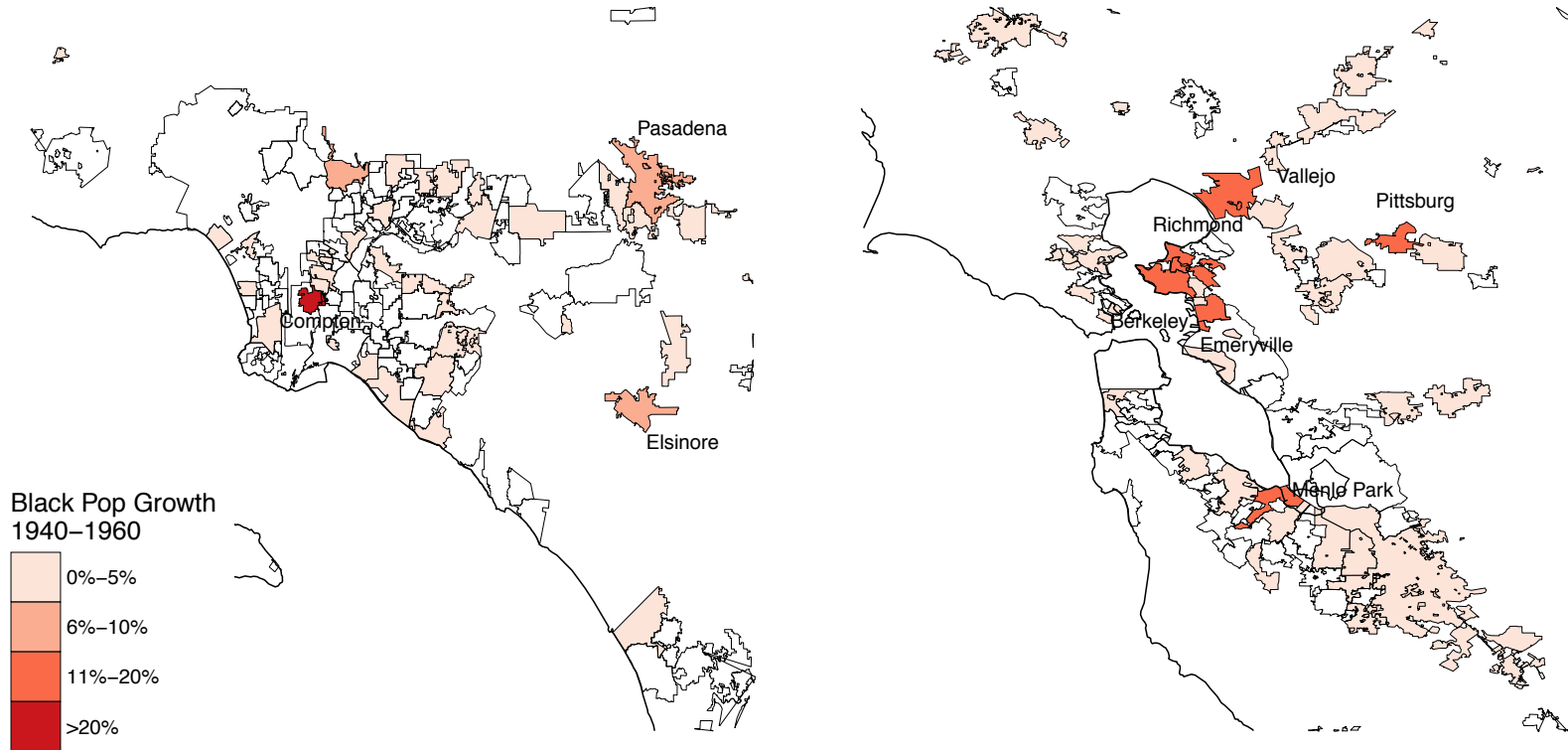
The SGM drastically changed this, and represents one of the largest demographic shocks to White society in contemporary American history. By 1960, California's Black population grew by over 600% to approximately 885,000. In a number of cities, the Black population exploded: Berkeley, Emeryville, Richmond, and Vallejo all saw their Black populations expand by 10 percentage points or more. In Compton, the Black population grew from *zero* to nearly 40 percent by 1960. Figure 1 displays the cities with the highest Black population growth. This population growth strained housing in the few Black neighborhoods throughout the state, increasing demand for housing in neighboring communities (HoSang 2010). As the Black community grew, political elites and homeowners sought to protect White communities from what they saw as a threat to home values and neighborhood identity (Lipsitz 1996). Together, these actors maintained racial exclusion through a variety of official and unofficial policies, leading to some of the most entrenched segregation in the nation (HoSang 2010).

The election of state legislator William Rumford (D) in 1949 and Governor Pat Brown (D) in 1958 aided in the passage of several anti-discrimination measures, precipitating the White backlash that culminated in Proposition 14. Real estate interests, politicians, and evangelical church leaders coordinated to collect signatures for a proposition to amend the state constitution, protecting what White residents believed was their right to discriminate. The measure, Proposition 14, passed 65 to 35 percent with overwhelming support from White Californians who, according to the CA Field Poll surveys, supported the measure by 3 to 1 (HoSang 2010). Less than one year after the passage of Proposition 14, the Watts Riot broke out in Los Angeles, which was one of the most destructive urban race riots in American history (Queally 2015).

Figure 1: Map of Rapidly Growing Black Cities 1940-1960

A. Southern California

B. Northern California



Note: City-level African American population growth 1940-1960 in Southern (panel A) and Northern (panel B) California. 98th percentile growth cities include Compton, Emeryville, Richmond, Vallejo, and Berkeley and additional 95th percentile growth cities of Pasadena, Elsinore, Menlo Park, Pittsburg. A map of the central valley, including 95th percentile growth cities of Bakersfield, Fowler, and Madera, is presented in Figure M.1.

In sum, 1940 to 1965 represents a pronounced period of racial change and conflict in the American West, and key features of the SGM afford a unique opportunity to assess the causal effect of racial threat on White voting behavior. First, the residential decisions of the study group (Whites) were largely made in the absence of the treatment group (African Americans). The interpretation of findings from prior observational studies of racial threat are often marred by concerns over selection bias; however, in the case of the SGM, residential decisions by Whites were made largely without consideration of the Black composition of their own or neighboring communities. Second, the migration of African Americans into California was rapid and concentrated in a few cities, increasing our confidence that the 1964 vote preceded much of the White flight that occurred between mid-1960 to 1980 following the Watts Riots, the overturning of Proposition 14 by the Supreme Court, and school desegregation (Schneider 2008). In short, we treat the rapid increase in California's Black population as a racially threatening "shock" to White society and a potentially important source of White support for Proposition 14.

EMPIRICAL STRATEGY AND DATA

As the SGM involved the drastic growth of Black populations in key areas throughout the state of California, our empirical strategy centers upon analyzing the effect of spatial proximity to Black growth cities on White support for Proposition 14. Theories of racial threat are rooted in Key's (1949) proposition that White political behavior in the American south was partly a consequence of the presence of African Americans in their communities. More recent work, however, argues that it is the *in-migration* and *growth* of an out-group that serves as a motivating shock to White political behavior (Green et al. 1998; Hopkins 2009; Newman 2013). Following this work, and that by Enos (2016), we conceptualize racial threat as the motivating effect on White political behavior of drastic changes in a spatially proximate Black population. Given that

theories of racial threat argue that the psychological salience of a group is a function of its size and spatial proximity (Enos 2016), we conceptualize our “treatment” as the proximity of White voters to epicenters of Black population growth.

We constructed a dataset from historical administrative data from the U.S. Census Bureau and the Office of the Secretary of State. The data is provided at the Census place (i.e., city) level, the finest level of aggregation we could acquire from historical sources. In total, our full dataset includes voting results for 392 cities in California. Because we are primarily interested in White voting behavior, we subset the data for our analyses to cities that were 90% or greater White ($n=340$) in 1960. Our dependent variable is city-level vote for Proposition 14 (mean = 65.7%, $sd=10.6\%$) as reported by the 1964 California Secretary of State Supplement to the Statement of the Vote. Our key independent variable is city proximity to its nearest Black growth city. To calculate this measure, we used city-level demographic estimates from the 1940 and 1960 U.S. Census files to calculate percentage point change in the Black population (mean=1.17%, $s.d.=3.97\%$). We identified Black growth cities as those in the 98th percentile of Black population growth, capturing cities that experienced Black population growth between 10 and 40 percentage points over the 20-year span, constructed a matrix of Euclidean distances between the centroids of all California cities, and defined proximity as the distance in miles from the *nearest* Black growth city (mean = -69.8, $sd = 64$). For ease of interpretation, we divide this variable by 100 and multiplied by -1, so that a unit increase indicates a 100 mile increase in proximity. By using a continuous treatment indicator on non-nested data, we bypass the concern in the racial threat literature over the sensitivity of results using multilevel data to the choice of administrative boundary (Tam Cho and Baer 2011; Voss 1996; for more discussion see Appendix B).

We gathered a number of additional control variables at the census tract level and merged them with our dataset via a weighted spatial join. We obtained 1964 voter registration figures for cities from the Berkeley School of Law Center for Research and control for city-level percent Democrat (of registered) to rule out partisanship as a confounder. Measures of population density control for variation in geographic and population size of each city. As poorer and more racially conservative Whites might be more likely to live adjacent to high Black growth cities, we include controls for median income, home ownership, and unemployment (descriptive statistics are included in Appendix C).

RESULTS

We begin by estimating the bivariate relationship between proximity and city-level vote for Proposition 14 for cities with 90% or greater White population, the results of which are presented in column 1 of Table 1. The results indicate that proximity to cities with rapidly growing Black populations is associated with higher levels of White support for Proposition 14. The benefit of this analysis is that it maximizes statistical power, as the analyses including control variables have a reduced sample size due to the limited coverage of smaller cities in the 1960 decennial census.¹ As the relationship in column 1 could be driven by confounders, column 2 presents the results from a model including city-level control variables. As shown in column 2, the relationship between proximity to nearest Black growth city and support for Proposition 14 holds. To assess the robustness of these results when accounting for possible nonlinearity in the

¹ The U.S. Census did not collect certain contextual variables for cities with fewer than 1,000 residents, an issue we address in Appendix E.

relationship between proximity and city-level voting for Proposition 14, we estimate a model including a squared and cubed proximity term (column 3) and logged proximity (column 4).

Table 1. The Effect of Proximity to Black Growth Areas on Support for Proposition 14

	Prop 14, 1964			
	(1)	(2)	(3)	(4)
Proximity	5.94*** (0.80)	5.88*** (1.46)	36.06*** (12.33)	
Proximity Squared			35.14** (14.94)	
Proximity Cubed			10.22** (4.90)	
Log Proximity				10.85*** (2.57)
Median Income		-0.72 (0.90)	-1.07 (1.06)	-0.83 (0.93)
Unemployment		-6.53 (31.61)	-10.31 (34.28)	-5.62 (31.23)
Homeownership		-7.14 (6.97)	-4.89 (7.12)	-7.00 (6.93)
Partisan Composition (%D)		1.49 (5.86)	-3.79 (6.95)	0.33 (5.90)
Population Density		0.01 (0.01)	0.01 (0.01)	0.01 (0.01)
Constant	70.69*** (0.84)	81.06*** (7.81)	89.64*** (10.45)	83.21*** (8.21)
N	337	181	181	181
R ²	0.12	0.08	0.12	0.09
Adjusted R ²	0.12	0.05	0.08	0.06
Residual Std. Error	9.50 (df = 335)	9.74 (df = 174)	9.59 (df = 172)	9.68 (df = 174)
F Statistic	46.34*** (df = 1; 335)	2.63** (df = 6; 174)	2.98*** (df = 8; 172)	3.02*** (df = 6; 174)

Note: OLS coefficients with heteroskedastic robust standard errors in parentheses. 90% and greater White cities. Columns 1 and 2 assume linear relationship between proximity and city-level Proposition 14 vote. Columns 3 and 4 allow for non-linearity. *p < .1; **p < .05; ***p < .01 (two-tailed).

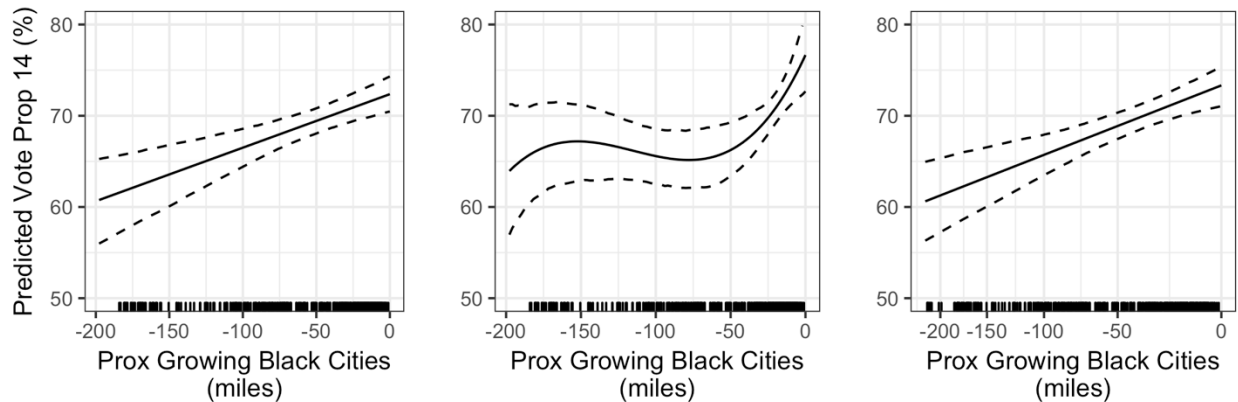
While these results indicate a non-linear relationship between these two variables, it is difficult to compare the average impact of proximity across models. To do so we estimate predicted values and first-differences.

We plot predicted city-level Proposition 14 vote in Figure 2 for models 2 (panel 1), 3 (panel 2), and 4 (panel 3) from Table 1. In panel 1, holding all other variables at their means, we find that a city located adjacent to a Black growth city is estimated to support Proposition 14 at 72.4% (95% CI: [70.5%, 74.3%]), whereas estimated support in a city 200 miles away (mean – 2 s.d.) is 60.6% (95% CI: [56.1%, 65.1%]), a difference of 11.8 percentage points (95% CI: [6%, 17.2%]). Looking at panel 2, we find that the effect of proximity seems to be most pronounced in the first 75 miles. The effect of moving from a city 75 miles away to one adjacent to a Black growth city is 11.5 percentage points (95% CI: [5.4%, 18.1%]). The difference across the full range of proximities is only a slightly larger 12.7% (95% CI: [4.3%, 20.6%]). In panel 3, using logged proximity, we find an almost identical first difference of 12.6% (95% CI: [6.4%, 18.9%]). Because the effect of proximity is similar in all models, for ease of interpretation we will use the linear specification for the remaining models in the paper.

ROBUSTNESS CHECKS

We demonstrate in the Appendix that our results hold when using beta regression (Table D.1) and when including county-level fixed effects (Table D.2). Given our interest in the behavior of White voters, we demonstrate that our results hold when further restricting the analysis to cities that were 95% or greater White in 1960 (Table E.1), and when employing an ecological inference model to estimate support for Proposition 14 among White voters (Table F.1). Alternatively, our results hold when lifting the percent White sample restrictions (Table E.1). Additionally, our results hold when using different thresholds to define a “treatment” city

Figure 2: Effect of Proximity to Black Growth Areas on Support for Proposition 14



Note: Lines indicate predicted city-level Proposition 14 vote and 95% confidence interval moving from 200 (2 s.d. below mean) to zero miles from Black growth cities for models 2, 3, and 4 from Table 1. All other variables are set to their means.

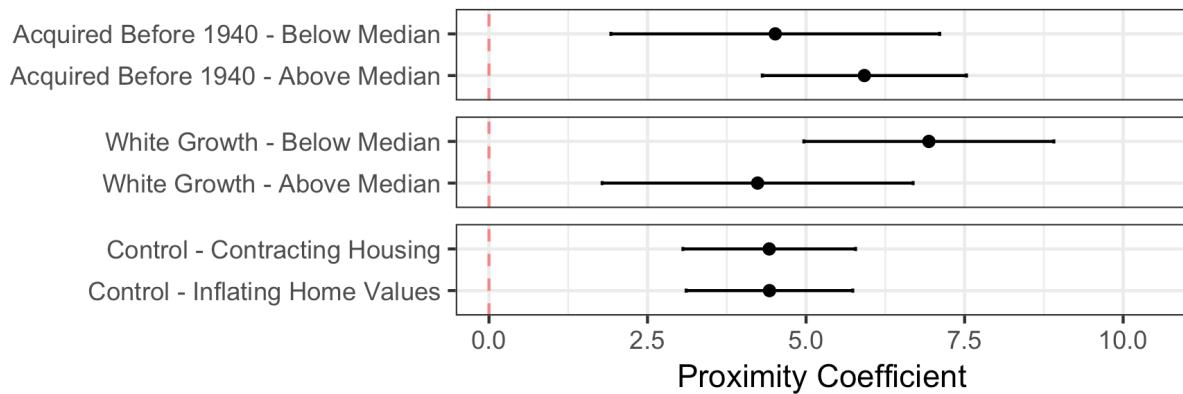
(Table G.1) and when measuring proximity to Black growth cities using driving distances and times (Table G.2). To account for possible post-treatment bias, we demonstrate that our results hold when replacing our 1960 control variables with pretreatment (i.e., before the SGM) variables derived from the 1940 Census (Table H.1). While column 1 of Table 1 demonstrates that our results hold when analyzing all predominantly White California cities, to further ensure that our results are not driven by the mid-to-large cities covered by the 1940 and 1960 Censuses, we demonstrate that the effect of proximity holds when analyzing the n=187 smaller-sized cities not covered by these censuses (Table E.1). Next, as placebo tests, we demonstrate that the positive effect of proximity to Black growth cities is restricted to Proposition 14 and not observed when analyzing race-neutral propositions (Table I.1). Lastly, we uncover complementary results to those presented in Table 1 when analyzing individual-level survey data estimating White support for Proposition 14 as a function of Black population growth in respondents' counties of residence (Table J.1).

While the SGM and the 1964 election offer a case where selection bias is substantially reduced, such concern is not entirely removed. Black residents did not settle at random in California cities. Further, while “White flight” from California cities was most pronounced between mid-1960 to 1980 (Schneider 2008), it is possible that substantial residential sorting occurred between 1940 to 1964. One method for addressing this possibility is to re-analyze our model among targeted subsamples of the data.

First, we explore whether our results hold when looking at White cities with *higher levels of White residential tenure*. The 1960 decennial census includes data on when individuals moved into their residence. Using this data, we can restrict our analysis to White cities where a higher rate of residents reported having moved in before 1940 (i.e., before the start of the SGM). The first row of results in Figure 3 (full results available in Table K.1) demonstrates that the effect of proximity to Black growth cities holds ($p < .01$) when looking at above-median tenure cities. This result is critical, as it indicates that when conducting a test reducing White residential selection bias, the estimated effect of proximity remains positive and statistically significant.

Second, we can assess whether our results hold when looking at majority-White cities with *lower levels of White population growth* between 1940-1960. Racially conservative Whites residing in cities experiencing Black in-migration may have fled to adjacent all-White cities, taking their racially threatened attitudes with them. Such a process could have induced the

Figure 3: Reanalysis by Residential Tenure, White Growth, and Housing Markets



Note: OLS regression coefficients and heteroskedastic robust standard errors of proximity to Black growth cities. 90% or greater White cities. The first panel splits the sample at median percent of city residents who moved into their residence prior to 1940, the second splits the sample at median White growth (1940-1960), and the final controls for proximity to cities with the largest drop in housing availability or increase in home values. Full model results available in Appendix Table K.1.

findings we observe, suggesting they are less due to the activation of racial threat among Whites residing in proximity to Black growth cities and due instead to the *migration* of racially threatened Whites to neighboring cities. While we find suggestive evidence that White populations contracted the most in cities within five miles of Black growth cities, we find no evidence that White population growth disproportionately occurred within neighboring cities five or more miles away from Black growth cities (see Figure L.1). Moreover, the results presented in Figure 3 belie this concern: rather than being endemic or more pronounced in White cities experiencing high White population growth, we find the effect of proximity to Black growth cities is stronger in White cities with below median White growth (range: [-17.2, -0.003], mean=-2.2).

It is also possible that “redlining” (Rothstein 2017) forced African Americans to settle in neighborhoods deemed less desirable, which may have contained poorer and more racially

conservative Whites. Such possibility could explain the relationship we observe between proximity to Black growth cities and White support for Proposition 14. This possibility is not suggested by the data, as proximity to Black growth cities is not strongly correlated with pretreatment indicators of 1940 socioeconomic standing, such as median home values ($r = .10$), homeownership rates ($r = .15$), or unemployment rates ($r = .01$). Another concern is that our results are due to housing competition. It is possible that proximity to Black growth cities is capturing the effect of proximity to areas experiencing increased competition for housing. The bottom panel of Figure 3 displays the coefficient for proximity to Black growth cities when adding a control variable for proximity to cities with the most drastic (95th percentile) contraction in available housing units (i.e., vacant units for sale or rent) between 1940-1960, or the most drastic increases in home values between 1940-1960. We find the effect of proximity holds in both models ($p < .001$), indicating that proximity to Black growth cities remains positive and significant when holding constant proximity to areas manifesting symptoms of housing competition.

CONCLUSION

Exploiting a large demographic shift during the SGM, we sidestep some of the concerns of existing observational research on racial threat and find evidence that White residential proximity to growing Black populations in California was positively associated with voting for Proposition 14 in the 1964 election. As such, our study makes a novel and compelling contribution to the existing scholarship on the role of racial threat in shaping White political behavior. Remarkably, demographic change remains a politicized and salient issue fifty years after the referendum we study. As the nation continues to diversify, understanding the impact of

these demographic shifts on the attitudes and behaviors of native-born residents is increasingly crucial to understanding national political trends writ large.

REFERENCES

- Acharya, Avidit, Matthew Blackwell, and Maya Sen. 2016. "The Political Legacy of American Slavery." *Journal of Politics* 78 (3): 621–41.
- Branton, Regina P., and Bradford S. Jones. 2005. "Reexamining Racial Attitudes: The Conditional Relationship between Diversity and Socioeconomic Environment." *American Journal of Political Science* 49 (2): 359–72.
- Clark, William A. V. 1992. "Residential Preferences and Residential Choices in a Multiethnic Context." *Demography* 29 (3): 451–66.
- Enos, Ryan. D. 2014. "Causal Effect of Intergroup Contact on Exclusionary Attitudes." *Proceedings of the National Academy of Sciences* 111 (10): 3699–3704.
- Enos, Ryan D. 2016. "What the Demolition of Public Housing Teaches Us about the Impact of Racial Threat on Political Behavior." *American Journal of Political Science* 60 (1): 123–42.
- Freund, David M. P. 2007. *Colored Property: State Policy and White Racial Politics in Suburban America*. Chicago, IL: University Of Chicago Press.
- Glaser, James M. 2003. "Social Context and Inter-Group Political Attitudes: Experiments in Group Conflict Theory." *British Journal of Political Science* 33 (4): 607–20.
- Green, Donald, Dara Z. Strolovitch and Janelle Wong. 1998. "Defended Neighborhoods, Integration, and Racially Motivated Crime." *American Journal of Sociology* 104(2): 372-403.
- Gregory, James. 2005. *The Southern Diaspora: How the Great Migrations of Black and White Southerners Transformed America*. Chapel Hill, NC: University of North Carolina Press.
- Hopkins, Daniel J. 2009. "The Diversity Discount: When Increasing Ethnic and Racial Diversity Presents Tax Increases." *The Journal of Politics* 71(1): 160-177.

- Hopkins, Daniel J. 2012. "Flooded Communities." *Political Research Quarterly* 65 (2): 443–59.
- HoSang, Daniel. 2010. *Racial Propositions: Ballot Initiatives and the Making of Postwar California*. Berkeley, CA: University of California Press.
- Key, V. O. 1949. *Southern Politics: In State and Nation*. Vintage Books.
- Lipsitz, George. 1996. *The Possessive Investment in Whiteness: How White People Profit from Identity Politics*. Philadelphia, PA: Temple University Press.
- Newman, Benjamin J. 2013. "Acculturating Contexts and Anglo Opposition to Immigration in the United States." *American Journal of Political Science* 57 (2): 374–90.
- Oliver, J. Eric. 2010. *The Paradoxes of Integration: Race, Neighborhood, and Civic Life in Multiethnic America*. Chicago, IL: University of Chicago Press.
- Oliver, J. Eric, and Janelle Wong. 2003. "Intergroup Prejudice in Multiethnic Settings." *American Journal of Political Science* 47 (4): 567.
- Queally, James. 2015. "Watts Riots: Traffic stop was the spark that ignited days of destruction in L.A." Los Angeles Times. <http://www.latimes.com/local/lanow/la-me-ln-watts-riots-explainer-20150715-htmstory.html>
- Rocha, Rene and Rodolfo Espino. 2009. "Racial Threat, Residential Segregation, and the Policy Attitudes of Anglos." *Political Research Quarterly* 62 (2): 415-426.
- Rothstein, Richard. 2017. *The Color of Law: A Forgotten History of How Our Government Segregated America*. London, U.K.: Liverlight Publishing.
- Schneider, Jack. 2007. "Escape from Los Angeles: White Flight from Los Angeles and Its Schools, 1960-1980." *Journal of Urban History* 34(6): 995-1012.
- Tam Cho, Wendy K. and Neil Baer. 2011. "Environmental Determinants of Racial Attitudes Redux: The Critical Decision Related to Operationalizing Context." *American Politics*

Research. 39(2): 414-436.

Voss, D. Stephen. 1996. "Beyond Racial Threat: Failure of an Old Hypothesis in the New South." *Journal of Politics* 58(4): 1156-1170.

Wilkerson, Isabel. 2011. *The Warmth of Other Suns: The Epic Story of America's Great Migration*. New York, NY: Vintage Books.

Appendix A: Expanded Literature Review

Existing work on racial threat has long been beset by conflicting findings. Some scholars find that proximity to outgroups fuels racially threatened attitudes and behaviors (Enos 2017; Tolbert and Grummel 2003; Giles and Hertz 1994), others that it has no effect (Voss 1996; Cain, Citrin, Wong 2000; Campbell et al 2006), and still others that it reduces threat (Fetzer 2000; Fox 2004; Welch et al 2001; Carsey 1995; Oliver and Wong 2003; Voss 1996; see Enos 2016 and Oliver 2010 for excellent reviews of the literature).

A number of reasons have been offered for these conflicting findings, including variation in the groups being studied (Oliver and Wong 2003), socio-economic conditions (Oliver and Mendelberg 2000; Tam Cho and Baer 2011), the levels of segregation of the given contexts (Enos 2017; Rocha and Espino 2009), and the operationalization of threat as standing population versus change in population (Alexseev 2006; Newman 2013; Green et al. 1998; Hopkins 2010; Hopkins 2009; Newman and Velez 2014). While all of these are important factors, two dominant explanations have been offered for conflicting results: residential self-selection and the modifiable areal unit problem (MAUP).

First, contexts aren't randomly assigned (Simpson 2008; Clark 1992). There are a number of reasons we might choose to live in a given community, including our attitudes towards racial and ethnic outgroups (Tam Cho, Gimpel, and Hui 2013; Oliver 2010; though see Mummolo and Nall 2016). The non-random nature of residential self-selection makes it difficult to tease out the causal effect of context on attitudes and behaviors using observational data.

Prior scholarship has attempted to address concerns over residential self-selection by controlling for self-reported neighborhood preferences (Oliver and Wong 2003) or preferences together with the ability to relocate (Enos and Gidron 2016), performing endogeneity tests (Rocha and Espino 2009), demonstrating that racial orientations are not predictive of respondents' racial and ethnic context (Branton and Jones 2005), using instrumental variables (Acharya et al 2016), using field experiments (Enos 2014), and recently, by identifying events where large changes in minority populations have occurred and where characteristics of the event facilitate causal inference, typically by mitigating concerns about selection bias (Hopkins 2012; Enos 2016).

Second, variation in outcomes could be driven by variation in the contextual or areal unit chosen for analysis (Yule and Kendall 1950; Openshaw and Taylor 1979). The relationship between racial composition and behavior, for example, has been examined at the state level (Leighley and Nagler 1992; Hero and Preuhs 2007), county level (Giles and Buckner 1993; Gaines and Tam Cho 2004; Key 1949; Hopkins w.p.), zip code (Leighley and Vedlitz 1999; Hopkins 2010), census tract (Oliver and Wong, 2003; Putnam 2007), and census block group (Gay 2006), among others. Individuals are nested within a number of different administrative geographic boundaries and the covariation of an outcome of interest with some contextual variable of interest can vary drastically depending on the choice of administrative geographic boundary. In fact, Oliver (2010) finds that high levels of racial diversity at the zip code level is correlated with low levels of prejudice among White residents of that "neighborhood," while high levels of racial diversity at the county level is generally correlated with higher level of prejudice.

This issue has frequently been cited as a contributor to the conflicting findings in the extant literature (Tam Cho and Baer 2011; Enos 2016; Oliver 2010; Voss 1996). Researchers generally attempt to bypass issues of MAUP by attempting to theoretically justify their choice of areal unit of analysis and conducting various robustness checks (Oliver 2010). More recently, researchers have attempted to avoid this problem all together by examining a continuous measure of spatial proximity to some “treatment” as their operationalization of threat (Enos 2016; Hopkins w.p.). For a greater discussion of the MAUP and how we address it, see Appendix M.

In sum, while a number of factors have been singled out as culprits in the literature’s conflicting findings, residential self-selection and the MAUP are most frequently cited as the chief culprits. Studies of racial threat need to carefully assess how both of these issues may affect the findings and thus the conclusion of the study.

Appendix B: Modifiable Areal Unit Problem (MAUP)

Two potential issues arise with regards to choice of areal unit of analysis (in our case, city), both of which fall under the rubric of the modifiable areal unit problem (MAUP) (Yule and Kendall 1950; Openshaw and Taylor 1979). For a discussion of the MAUP in the racial threat literature, see Appendix A.

The first issue, which is most relevant to the vast majority of studies on contextual effects (see Enos 2016; Oliver 2010; Tam Cho and Baer 2011), is that individuals are nested within a number of different administrative geographic boundaries. This first concern is one that our analysis avoids, as we are not using multilevel data and are not making a choice over a contextual unit to embed our units of analysis (i.e., cities) within. In other words, we are not examining the behavior of our unit of analysis as a function of the demographic composition or change of some researcher-chosen overarching areal unit; rather, like Enos (2016), we examine the behavior of our unit of analysis as a function of its *proximity* to a “treatment” stimulus, which in our case is cities where the Black population grew dramatically between 1940 to 1960. Proximity is a continuous measure and is limited not by administrative boundaries but only by the maximum range of spatial distance between cities in California.

The second issue has to do with the use of aggregate data. Here, the applicable MAUP concerns whether or not the positive and statistically significant relationship we observe between proximity to Black growth cities and support for Proposition 14 would change if we used data aggregated at different levels (e.g., MSA, zip code, census tract, etc.). Our analysis uses aggregations of voters at the city-level, and it is possible that an individual on the eastern-most boundary of a city lives in a different micro-context (e.g., further / closer to a Black growth treatment city) than an individual on the western-most boundary of a city. Without geo-coded survey responses or aggregate data at finer levels of geography, we do not have the ability to assess greater levels of detail. However, there are several reasons why we believe these types of concerns do not overly threaten the inferences we draw from our city-level findings.

First, by measuring proximity between centroids of cities, we average across all of the proximities for individuals residing at opposite ends of a given city. Thus, even if we were to entertain the possibility of the existence of unobserved heterogeneity in White voter behavior within cities as a function of within-city variation in racial micro-context, the use of city centroids to measure distance between predominately White cities and Black growth cities averages across all of the proximities for White voters residing in varying within-city micro-contexts.

Perhaps more convincingly, variation in the actual geographic scale of the cities in our data makes it possible to assess whether our main findings hold when focusing on cities with smaller total land area, as such cities essentially represent smaller aggregations of White voters across space. Indeed, city land areas in our dataset range between 0.3 and 455 miles (mean=8.15, median=3.4), indicating that our analysis combines cities the size of the average contemporary census tract (in LA county today, 1.73 square miles) and zip code (37 square miles, based upon estimates from the 2016 American Community Survey) with cities approximating the size of the

average county in states such as Ohio, Tennessee, and Maryland (450 square miles). When restricting the analysis to 90% White or greater cities with below median total land area, we find that our results hold. We present the results from this analysis in Table B.1. Within the confines of the available data, this analysis essentially illustrates that our results hold when using smaller levels of geographic aggregation, as the land area of this below median subsample of cities is close to the size of an average 2010 census tract in LA county (1.73 square miles).

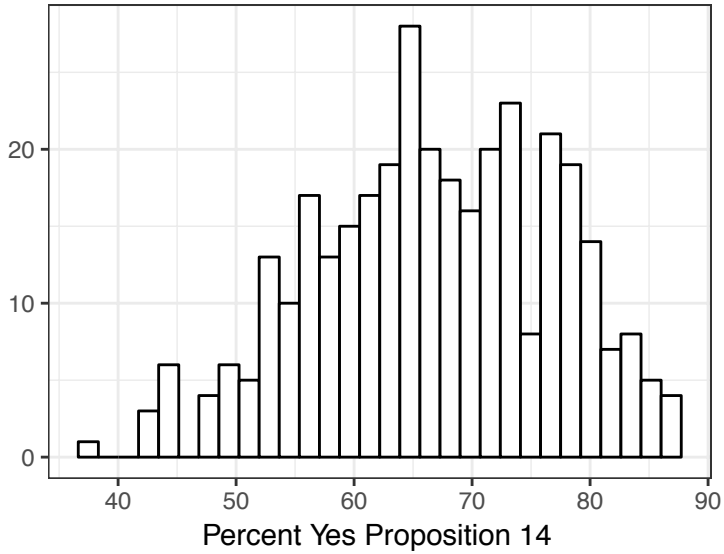
Table B.1: Sample Restrictions by Land Area

	Prop 14, 1964	
	(1)	(2)
Proximity	4.62*** (1.13)	7.97*** (1.57)
Constant	68.94*** (1.45)	71.79*** (1.18)
N	149	148
R ²	0.10	0.11
Adjusted R ²	0.09	0.10
Residual Std. Error	8.91 (df = 147)	9.87 (df = 146)
F Statistic	16.39*** (df = 1; 147)	17.73*** (df = 1; 146)

*Note: OLS coefficients and heteroskedastic robust standard errors in parentheses. Sample restricted to cities that are 90% and greater White and are below median land area (column 1) and above median land area (column 2). * $p < .1$; ** $p < .05$; *** $p < .01$ (two-tailed).*

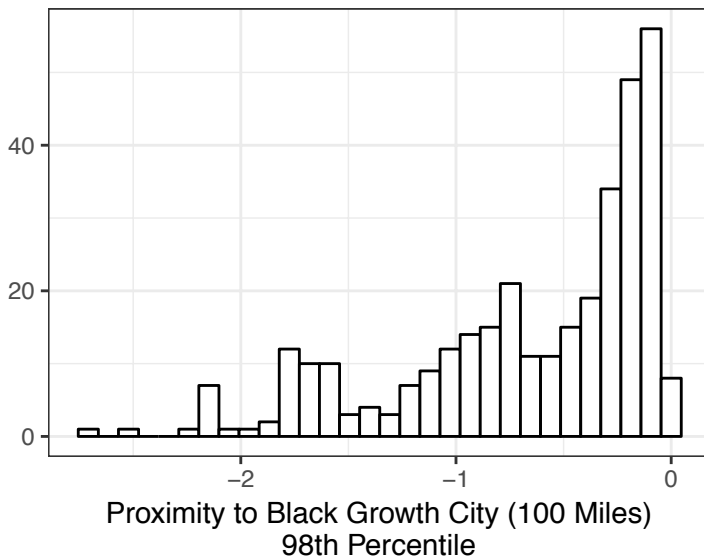
C. Descriptive Statistics

Figure C.1: Distributions of Votes for Proposition 14



Note: Bars indicate distribution of city-level vote for Proposition 14 for 90% or greater White cities.

Figure C.2: Distributions of Proximity to Black Growth Cities



Note: Bars indicate distribution of city proximity to nearest Black growth city in miles.

Table C.1: Descriptive Statistics

	Mean	Standard Deviation
Percent Democrat (1964)	57%	14%
Population Density	30,329	80,695
Owner Occupied Units	61%	15%
Income	\$6,694.84	\$1570.34
Unemployment	6%	3%

Note: Cells display mean and standard deviation of control variables. For the analysis, we rescale population density and income to 1000s.

D. Alternate Modeling Specifications

Table D.1: Effect of Proximity to Black Growth Cities on Support for Proposition 14

	Prop 14, 1964
Proximity	0.28*** (0.08)
Median Income	-0.02 (0.03)
Unemployment	-0.16 (1.35)
Homeownership	-0.40 (0.29)
Partisan Composition (%D)	0.07 (0.27)
Population Density	0.000 (0.000)
Constant	1.31*** (0.30)
N	181
R ²	0.10
Log Likelihood	175.89

*Note: Beta regression coefficients with standard errors in parentheses. Sample restricted to 90% and greater White cities. * $p < .1$; ** $p < .05$; *** $p < .01$ (two-tailed).*

Table D.2: Reanalysis with County Fixed-Effects

	Prop 14, 1964
Proximity	5.36* (2.78)
Median Income	-0.58 (0.63)
Unemployment	-39.28 (25.95)
Homeownership	4.42 (5.53)
Partisan Composition (%D)	-3.16 (4.91)
Population Density	0.001 (0.004)
Constant	74.27*** (5.82)
Fixed effects?	Yes
N	181
R ²	0.69
Adjusted R ²	0.65
Residual Std. Error	5.91 (df = 159)
F Statistic	16.96*** (df = 21; 159)

*Note: OLS coefficients with heteroskedastic robust standard errors in parentheses. Sample restricted to 90% and greater White cities. Model includes county fixed effects. * $p < .1$; ** $p < .05$; *** $p < .01$ (two-tailed).*

E. Sample Size: Restrictions and Controls

In this section we assess the robustness of the effect of proximity to Black growth cities given differing sample sizes due to (1) the introduction of controls with missing values and (2) restricting our sample to 90% and 95% or greater White cities.

The most straight forward way of determining whether our results are influenced by the sample restrictions is to assess the robustness of the proximity coefficient as we restrict the sample in a variety of ways. First, we assess the bivariate relationship between proximity and city-level vote for Proposition 14 in the full dataset, thus including all n=386 cities for which we have proximity measures and for which data is reported in the Supplement to the Statement of the Vote (column 1), then for the remaining cities that are included in the sample if we were to include controls (column 2), and finally for those cities that were dropped from the regression for missing covariates (column 3). We then look at the coefficient when we include the full set of controls for all cities (column 4), for 90% or greater White cities (column 5) and for 95% or greater White cities (column 6).

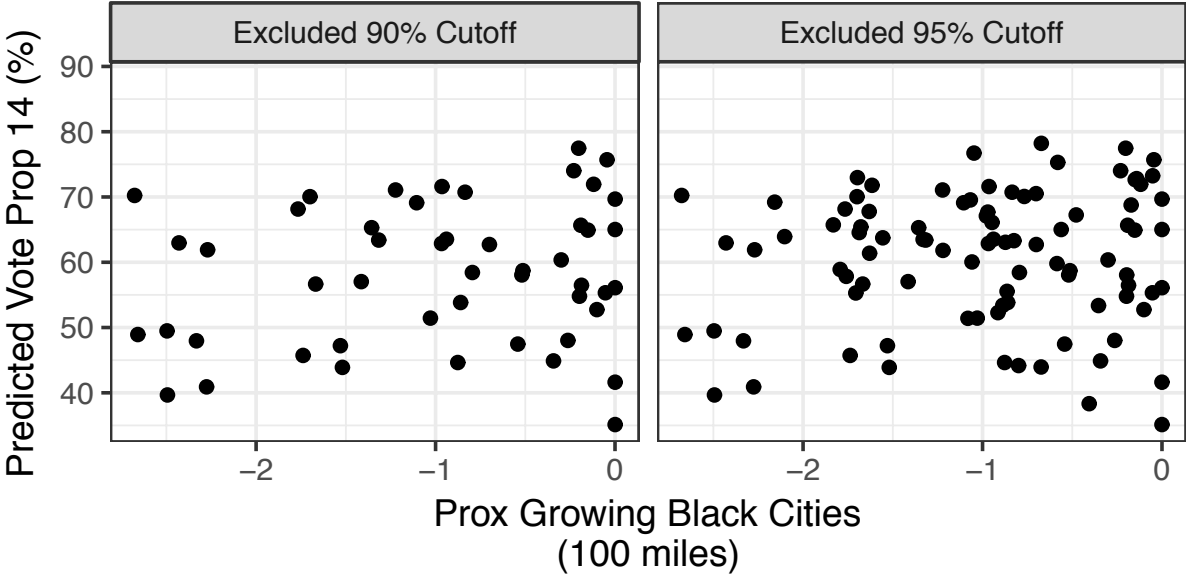
Across all sample restrictions, we see a retention of a positive and statistically significant effect of proximity to Black growth cities on support for Proposition 14, which increases our confidence that the results are not being driven by the exclusion of cities either from sample restrictions or missing data on control variables.

Table E.1: Effect of Sample Restrictions on Relationship Between Proximity and City Vote for Proposition 14

	Prop 14, 1964					
	Full	Full Control Cities	Full Excluded Cities	Full Controls	90% Controls	95% Controls
	(1)	(2)	(3)	(4)	(5)	(6)
Proximity	5.686*** (0.782)	3.988*** (1.352)	4.474*** (1.098)	4.891*** (1.647)	5.882*** (1.463)	6.179*** (2.068)
Median Income				-0.885 (0.862)	-0.724 (0.901)	-0.814 (0.961)
Unemployment				-11.435 (31.433)	-6.528 (31.610)	-4.123 (33.907)
Homeownership				0.246 (7.039)	-7.143 (6.973)	-5.223 (7.770)
Partisan Composition (%D)				-3.042 (5.986)	1.487 (5.863)	1.286 (6.417)
Population Density				-0.003*** (0.001)	0.009 (0.007)	0.023 (0.016)
Constant	69.671*** (0.829)	70.445*** (1.070)	66.888*** (1.365)	79.486*** (7.898)	81.059*** (7.806)	80.350*** (8.633)
N	386	199	187	199	181	161
R ²	0.118	0.029	0.100	0.064	0.083	0.090
Adjusted R ²	0.116	0.024	0.095	0.035	0.052	0.054
Residual Std. Error	9.938 (df = 384)	10.507 (df = 197)	9.015 (df = 185)	10.448 (df = 192)	9.744 (df = 174)	10.080 (df = 154)
F Statistic	51.619*** (df = 1; 384)	5.935** (df = 1; 197)	20.632*** (df = 1; 185)	2.202** (df = 6; 192)	2.629** (df = 6; 174)	2.535** (df = 6; 154)

*Note: OLS coefficients and heteroskedastic robust standard errors in parentheses. Column 1 displays bivariate relationship between proximity and Proposition 14 vote for the full sample. In Column 2 we show the bivariate relationship for just the cities that remain once we introduce controls. In Column 3 we show the bivariate relationship for those cities that are excluded when controls are introduced. Columns 4, 5, and 6 show results of the relationship with controls in the full sample, in 90% or greater White cities, and 95% or greater White cities. * $p < .1$; ** $p < .05$; *** $p < .01$ (two-tailed).*

Figure E.1: Proximity and Vote of Excluded Cities Under Sample Restrictions



Note: bivariate relationship between proximity and city-level vote for Proposition 14 for cities excluded when we restrict the sample to 90% (panel 1) and 95% White (panel 2).

F. Ecological Inference

In an effort to address ecological inference issues when using aggregate data, we run an ecological inference (EI) analysis for our cities to obtain more precise estimates of White and Nonwhite behavior across all cities. We use King's (1997) EI package to infer the proportion of White and non-White voters who supported Proposition 14 within each city given vectors of (1) support for Proposition 14, (2) the White and Non-White population within cities, and (3) the total population within cities. We find that the results closely correspond to Field Poll estimates from the 1960s (as cited in HoSang 2010) with an average White support of 68% and Black support of only 10%. We then re-estimated our main model (Table F.1) substituting out the official tally of city-level vote for Proposition 14 with our EI estimated White support for Proposition 14. We find that the proximity coefficient remains essentially unchanged by this substitution, increasing our confidence that our method of sample restriction is appropriate.

Table F.1: Effect of Proximity on Estimated (EI) White Prop 14 Vote

	Prop 14, 1964
Proximity	4.83*** (1.51)
Median Income	-0.76 (0.90)
Unemployment	0.27 (31.27)
Homeownership	-6.70 (6.49)
Partisan Composition (%D)	0.53 (5.66)
Population Density	-0.001** (0.001)
Constant	82.35*** (7.84)
N	199
R ²	0.06
Adjusted R ²	0.03
Residual Std. Error	9.80 (df = 192)
F Statistic	1.93* (df = 6; 192)

*Note: OLS coefficients and heteroskedastic robust standard errors in parentheses. Outcome is EI-estimated city-level White vote for Proposition 14. Data is not restricted to 90% or greater White cities. * $p < .1$; ** $p < .05$; *** $p < .01$ (two-tailed).*

G. Proximity Measures

In this section we assess the robustness of the effect of proximity to Black growth cities to different operationalizations of proximity both with regards to (1) our choice of treatment cities and (2) the choice of Euclidean distance between city centroids as our measure of proximity.

Choice of ‘Treatment Cities’

We conduct robustness checks using additional cut points to define “Black growth cities,” including 95th, 90th, and 85th percentiles. We choose the 98th percentile for our models but assess the robustness of our choice in the Table G.1. We find that the relationship is similar, and indeed strengthens, regardless of how we define a Black growth city.

Table G.1: Alternative Choices of Treatment Cities

	Prop 14, 1964			
	(1)	(2)	(3)	(4)
Proximity 98	5.882*** (1.463)			
Proximity 95		5.455** (2.566)		
Proximity 90			8.926** (3.674)	
Proximity 85				12.190** (5.091)
Median Income	-0.724 (0.901)	-0.520 (0.840)	-0.390 (0.829)	-0.375 (0.837)
Unemployment	-6.528 (31.610)	-34.750 (31.252)	-37.902 (30.400)	-39.711 (30.150)
Homeownership	-7.143 (6.973)	-7.413 (7.320)	-8.257 (7.364)	-8.558 (7.366)
Partisan Composition	1.487 (5.863)	3.443 (5.945)	4.661 (6.031)	5.262 (6.037)
Population Density	0.009 (0.007)	0.010 (0.008)	0.007 (0.008)	0.007 (0.008)
Constant	81.059*** (7.806)	78.910*** (7.433)	78.276*** (7.039)	78.389*** (7.048)
N	181	181	181	181
R ²	0.083	0.041	0.050	0.062

Adjusted R ²	0.052	0.008	0.017	0.030
Residual Std. Error (df = 174)	9.744	9.965	9.918	9.855
F Statistic (df = 6; 174)	2.629**	1.239	1.527	1.920*

*Note: OLS coefficients and heteroskedastic robust standard errors in parentheses. Sample is restricted to 90% or greater White cities. Each model defines definition of Black growth city as proximity to nearest city that experienced greater than or equal to the n-th percentile of Black population growth between 1940 and 1960. *p < .1; **p < .05; ***p < .01 (two-tailed).*

Choice of Euclidean Distance

The earliest available city shapefiles were from the 1980 decennial census. While it is true that California cities likely annexed unincorporated territory in the sixteen years following the 1964 election, the centroids of the cities do not change dramatically over time.

In order to address the robustness of this choice, we conducted three additional analyses. First, following Nall, Schneer, and Carpenter (2018), we estimate driving distance between cities in the United States using an OpenStreetMap protocol API, an open source mapping software. Second, we used the same software to calculate drive times, using current driving conditions (not adjusting for traffic). Third, because we were concerned that contemporary driving distances and times may not be good proxies for driving times and distances in the 1960s, given the different infrastructure landscape at the time, we acquired a copy of Rand McNally’s Standard Highway Mileage Guide from 1966 (which is the legal standard for driving distances under 28 U.S.C. 1821 for driving mile reimbursement, <https://www.law.cornell.edu/cfr/text/28/21.5>.) The guide includes driving distances between 31 different cities in California (for a total of 961 unique distance pairs). These distances were hand-keyed into a distance matrix and then compared to present day driving distances.

We find that contemporary driving distance, drive time, and Euclidean distances all correlate at greater than 0.98. Substituting driving distance and drive time in the model as a proximity measure does not change the substantive relationship between proximity and voting for Proposition 14, as we show in Table G.2. Finally, 1966 and contemporary driving distances correlate at 0.998, signaling to us that driving distances have not changed dramatically over the last 50 years and therefore current driving distances are a good proxy for 1960s driving distances.

Table G.2: Operationalizing Proximity as Driving Distance and Travel Time

	Vote to Prop 14		
	(1)	(2)	(3)
Proximity	5.882*** (1.463)		
Driving Distance		4.952*** (1.274)	
Travel Time			3.000*** (0.810)
Median Income	1.487 (5.863)	1.482 (5.914)	1.263 (5.917)
Unemployment	0.009 (0.007)	0.008 (0.007)	0.008 (0.007)
Homeownership	-7.143 (6.973)	-7.077 (6.948)	-7.108 (6.950)
Partisan Composition (%D)	-0.724 (0.901)	-0.700 (0.891)	-0.683 (0.889)
Population Density	-6.528 (31.610)	-8.246 (31.891)	-9.355 (31.723)
Constant	81.059*** (7.806)	81.051*** (7.751)	81.652*** (7.845)
N	181	181	181
R ²	0.083	0.081	0.075
Adjusted R ²	0.052	0.049	0.043
Residual Std. Error (df = 174)	9.744	9.757	9.786
F Statistic (df = 6; 174)	2.629**	2.544**	2.360**

*Note: OLS coefficients with heteroskedastic robust standard errors in parentheses. Sample is restricted to 90% or greater White cities. Column 1 displays our primary analysis using proximity to growing Black cities as the primary independent variable using Euclidean distance between the centroids of cities as our operationalization of proximity. For comparison, in Column 2, we run the same model but operationalize proximity as driving distance to growing Black cities. Driving distance was calculated using the OpenStreetMap protocol API. The third column uses estimated drive time instead of proximity using the same OpenStreetMap protocol API. The differences in effect of proximity using any of these measures are trivial. * $p < .1$; ** $p < .05$; *** $p < .01$ (two-tailed).*

H. 1940 Covariates

An issue worth addressing is the non-random settlement pattern of African Americans arriving into California. One possibility is that “redlining” (Rothstein 2017) led African Americans to settle in neighborhoods deemed less desirable, which may have housed lower socioeconomic status, and consequently, more racially conservative Whites. Such possibility could explain the negative relationship we observe between Black growth and White support for Proposition 14. This possibility, however, is not suggested by the data, as proximity to Black growth cities among mostly (90% or greater) White cities is not strongly correlated with pretreatment (i.e., pre-SGM) 1940 median home values ($r = .10$), homeownership rates ($r = .15$), or 1940 unemployment rates ($r = .01$). Nonetheless, as an additional robustness check, and to account for the possibility that the 1960 controls are post-treatment, we re-estimated the model presented in Table 1 including pretreatment controls for 1940 median home values (median household income is not available in the 1940 census track file; given this, we use median home value as a proxy for the level of wealth of a city in 1940), 1940 unemployment, 1940 homeownership, and 1940 population density. When replacing the 1960 covariates with 1940 covariates, we find that the effect of proximity remains positive and statistically significant ($p=0.035$). Full model results are below in Table H.1.

Table H.1: Effect of Proximity on Voting 1940 Covariates

	Prop 14, 1964
Proximity	23.370** (10.879)
Partisan Composition	-19.567*** (6.923)
Population Density	0.141* (0.071)
Homeownership	0.129 (0.088)
Median Home Values	-0.366** (0.173)
Unemployment	140.154 (112.375)
Constant	80.796*** (7.641)
N	69
R ²	0.194
Adjusted R ²	0.116
Residual Std. Error	8.047 (df = 62)
F Statistic	2.486** (df = 6; 62)

*Note: OLS regression coefficients with standard errors in parentheses. Sample restricted to 90% and greater White cities. All controls, with the exception of partisan composition were from the 1940 census. * $p < .1$; ** $p < .05$; *** $p < .01$*

I. Placebo Tests: Voting for Non-Racial Propositions

We include a number of placebo tests to ensure that our measure of proximity was not correlated with non-racial ballot propositions. While city-level vote tabulations for other ballot propositions in 1964 were not available in the Supplement to the Statement of the Vote, we did locate city-level tabulations for two other non-racial ballot propositions in 1966.

The 1966 Supplement contained tabulated city-level results for two prominent race-neutral ballot measures: Proposition 1, which authorized the investment of public pension or retirement funds in the stock market, and Proposition 16, which enhanced the prohibition on the production, distribution, sale, and possession of obscene materials. The argument written in favor of Proposition 1 concerned the outdated law that prevented public employee retirement fund managers from investing in common stocks which impeded a business-like approach to the management of the funds, whereas the argument written against Proposition 1 argued that the stock market was simply too risky given the speculative nature and fluctuations of the stock market. The argument written in favor of Proposition 16 concerned the necessity of protecting teenagers and young children from smut publishers, whereas the argument against concerned the constitutionality of California trying to censor art and literature. Voter information guides from these and other past California General Elections are archived at UC Hastings College of the Law (https://repository.uchastings.edu/ca_ballot_pamphlets/).

In Table I.1 we display the results of placebo tests estimating the effect of proximity to Black growth cities on support for these two race-neutral propositions. The results from the placebo tests indicate that proximity to Black growth cities is only associated with a statistically significant increase in voter support in the case of Proposition 14. In the case of Propositions 1 and 16 in 1966, the effect of proximity to Black growth cities is statistically indiscernible from zero. These findings increase our confidence that our measure of proximity is tapping into racial threat and not a different underlying phenomenon.

Table I.1: Placebo Tests – Effect of Proximity on Voting for Non-Racial Propositions

	Prop 14, 1964	Prop 1, 1966	Prop 16, 1966
	(1)	(2)	(3)
Proximity	5.88*** (1.46)	0.79 (1.19)	-0.19 (1.14)
Median Income	-0.72 (0.90)	1.14*** (0.43)	-1.35* (0.82)
Unemployment	-6.53 (31.61)	-18.71 (26.09)	23.78 (27.46)
Homeownership	-7.14 (6.97)	0.25 (3.64)	-1.76 (4.98)
Partisan Composition (%D)	1.49 (5.86)	-14.41*** (4.69)	6.14 (4.68)
Population Density	0.01 (0.01)	0.003 (0.002)	-0.001 (0.004)
Constant	81.06*** (7.81)	59.87*** (5.33)	51.02*** (7.27)
N	181	181	181
R ²	0.08	0.29	0.18
Adjusted R ²	0.05	0.27	0.15
Residual Std. Error (df = 174)	9.74	6.24	7.42
F Statistic (df = 6; 174)	2.63**	12.13***	6.37***

*Note: OLS coefficients and heteroskedastic robust standard errors in parentheses with sample restriction to 90% or greater White cities. Column 1 displays our main model result for reference. Column 2 displays model results for 1966 CA Proposition 1. Proposition 1 allowed public pension funds to invest in equities, lifting the requirement that these funds only invest in bonds. Column 3 displays results for 1966 Proposition 16, which was a prohibition on obscene materials. We find that these non-racial propositions are not positively correlated with proximity to growing Black communities. * $p < .1$; ** $p < .05$; *** $p < .01$ (two-tailed).*

J. Estimating Individual-Level Level Support for Proposition 14

Another way we can operationalize proximity, which hews more closely to existing literature on racial threat, is to look at racial threat as a function of growing Black population within an individual's county. Fortunately, three surveys in 1964 asked California respondents how they intended to vote on Proposition 14.

With this data, we can bypass the issue of discerning individual-level White behavior from aggregate data and instead examine individual level attitudes as a function of proximal growing Black population. To do this, we downloaded and pooled California Field Poll data from 1964 on support for Proposition 14 (survey 6405, n=1128, fielded 8/31/64-9/5/64, survey 6406, n=1193, fielded 10/2/64-10/7/64, survey 6407, n=1148, fielded 10/23/64-10/28/64). In Model 1 in Table J.1 we display individual-level White support for Proposition 14, controlling for county and individual level demographics, as a function of county-level Black population growth. We find that this county-level demographic change is correlated with support for Proposition 14, consistent with our findings on aggregate vote results for Proposition 14. This finding provides additional evidence that our results are robust to a more traditional operationalization of racial threat in California.

While this type of analysis is comparable to what typically is done in the extant literature on racial threat, this type of analysis is also highly vulnerable to the modifiable areal unit problem (MAUP) (Enos 2016). In the end, the value of this analysis is to demonstrate that the results from the aggregate city-level analyses presented in the main manuscript hold when utilizing an alternative analytic strategy employing individual-level survey data and conducting contextual analysis (i.e., on nested or multilevel data). The consistency of the results increase our confidence that White support for Proposition 14 derived from racial threat from growing Black populations.

Table J.1: Individual-Level White Opposition to Rumford Act 1964

	Prop 14, 1964	
	Logit	OLS
	(1)	(2)
Growth in Black Pop 1940-1960	6.82***	1.65***
	(1.91)	(0.45)
Pop Density County 1940	-0.04**	-0.01**
	(0.02)	(0.004)
Unemployed County 1940	3.63**	0.88**
	(1.68)	(0.40)
Female	-0.19**	-0.05**
	(0.09)	(0.02)
Age 30-39	-0.06	-0.01
	(0.14)	(0.03)
Age 40-49	-0.28**	-0.07**
	(0.14)	(0.03)
Age 50-59	-0.06	-0.01
	(0.15)	(0.04)
Age 60-69	-0.22	-0.05
	(0.16)	(0.04)
Age Over 70	-0.27	-0.07
	(0.18)	(0.04)
Homeowner	-0.25**	-0.06**
	(0.10)	(0.02)
College	-0.27**	-0.07**
	(0.11)	(0.03)
Income	-0.06**	-0.01**
	(0.03)	(0.01)
Survey 6406	-0.02	-0.004
	(0.12)	(0.03)
Survey 6407	0.44***	0.11***
	(0.10)	(0.02)
Constant	0.02	0.50***
	(0.29)	(0.07)
N	2,630	2,630

*Note: Logistic regression (column 1) and OLS coefficients (column 2) with heteroskedastic robust standard errors clustered at the county level in parentheses. Regression analysis uses survey weights. Growth in Black population measured as percent change in Black population at the county level between 1940 and 1960. * p < .1; ** p < .05; *** p < .01 (two-tailed).*

K. Robustness Residential Tenure, White Growth, and Housing Markets

Table K.1: Controlling for Residential Tenure, White Growth, and Housing Markets

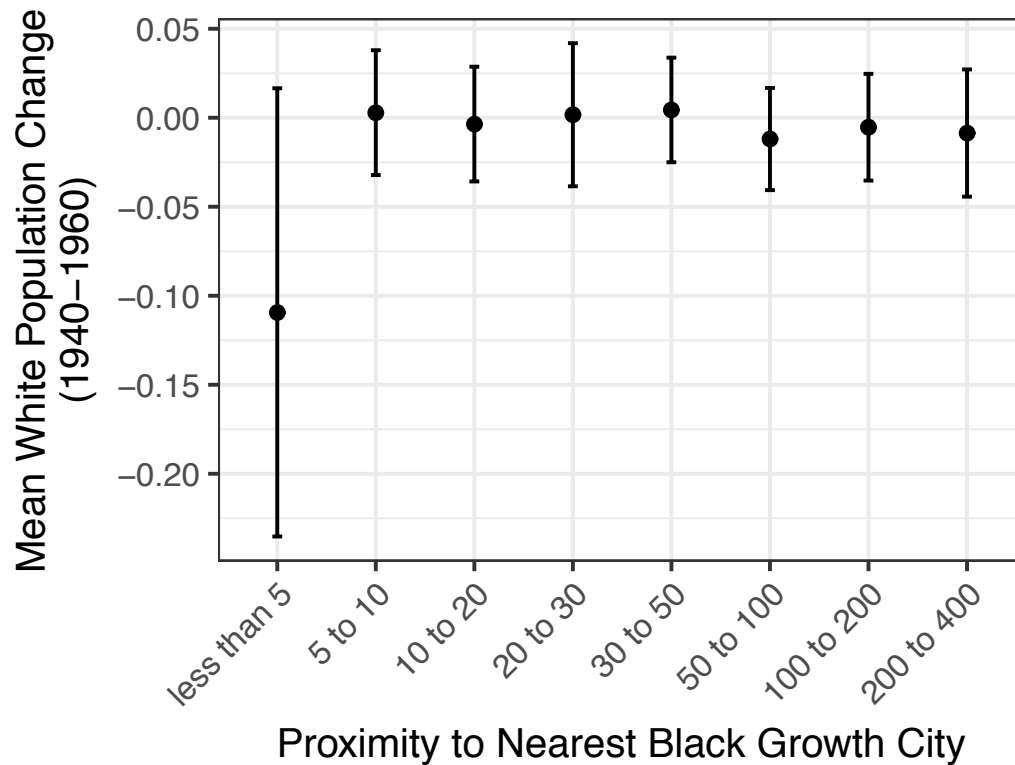
	Prop 14, 1964					
	< Median Res Tenure	> Median Res Tenure	< Median White Grow	> Median White Grow	Prox Contracting Housing	Prox Rising Home Values
	(1)	(2)	(3)	(4)	(5)	(6)
Proximity	4.51*	5.92***	6.94***	4.24*	4.42***	4.42***
	(2.59)	(1.61)	(1.97)	(2.45)	(1.36)	(1.31)
Contracting Housing					4.97***	
					(0.50)	
Home Values						4.27***
						(0.43)
Median Income	-5.06***	-0.29	-2.37**	0.11	-0.33	-0.25
	(1.23)	(0.97)	(0.95)	(1.00)	(0.64)	(0.63)
Unemployment	14.58	-12.65	-62.40*	110.62**	-23.11	-21.56
	(58.71)	(34.04)	(36.04)	(49.59)	(25.46)	(25.26)
Homeownership	12.52	-17.11*	-18.79**	1.73	3.76	2.12
	(9.28)	(9.10)	(8.59)	(11.56)	(5.88)	(5.86)
Median Home Values	-29.07***	5.90	18.40*	-11.60	4.73	5.03
	(7.85)	(7.33)	(9.55)	(8.86)	(5.01)	(5.01)
Unemployment	0.13***	0.005	0.001	0.10***	0.002	0.003
	(0.03)	(0.01)	(0.004)	(0.03)	(0.004)	(0.004)
Homeownership	113.84***	81.00***	92.22***	67.65***	77.31***	76.73***
	(11.72)	(8.81)	(7.70)	(10.29)	(5.39)	(5.33)
N	53	128	64	84	181	181
R ²	0.45	0.11	0.27	0.15	0.47	0.46
Adjusted R ²	0.38	0.07	0.20	0.09	0.44	0.44
Residual Std. Error	6.32 (df = 46)	10.29 (df = 121)	8.55 (df = 57)	9.83 (df = 77)	7.46 (df = 173)	7.50 (df = 173)
F Statistic	6.24*** (df = 6; 46)	2.50** (df = 6; 121)	3.59*** (df = 6; 57)	2.30** (df = 6; 77)	21.53*** (df = 7; 173)	21.02*** (df = 7; 173)

*Note: OLS regression coefficients and heteroskedastic robust standard errors for fully specified models in 90% White or greater cities with samples split at median residential tenure before 1940 (columns 1 and 2), median White population growth (columns 3 and 4), and controlling for proximity to cities with the most rapidly contracting housing markets and cities with the fastest growing cost of living (columns 5 and 6). * $p < 0.1$; ** $p < 0.05$; *** $p < 0.01$ (two-tailed)*

L. White Flight

To explore the possibility that racially threatened White residents fled further away to outer ring suburbs and rural areas, leaving behind some mixture of presumably racially tolerant (i.e., liberal) Whites and those unable to relocate, we estimate the mean level of change in White population at various binned distances from Black growth cities. We find that almost all of the White flight, to the extent that it occurred, was concentrated in the first five miles.

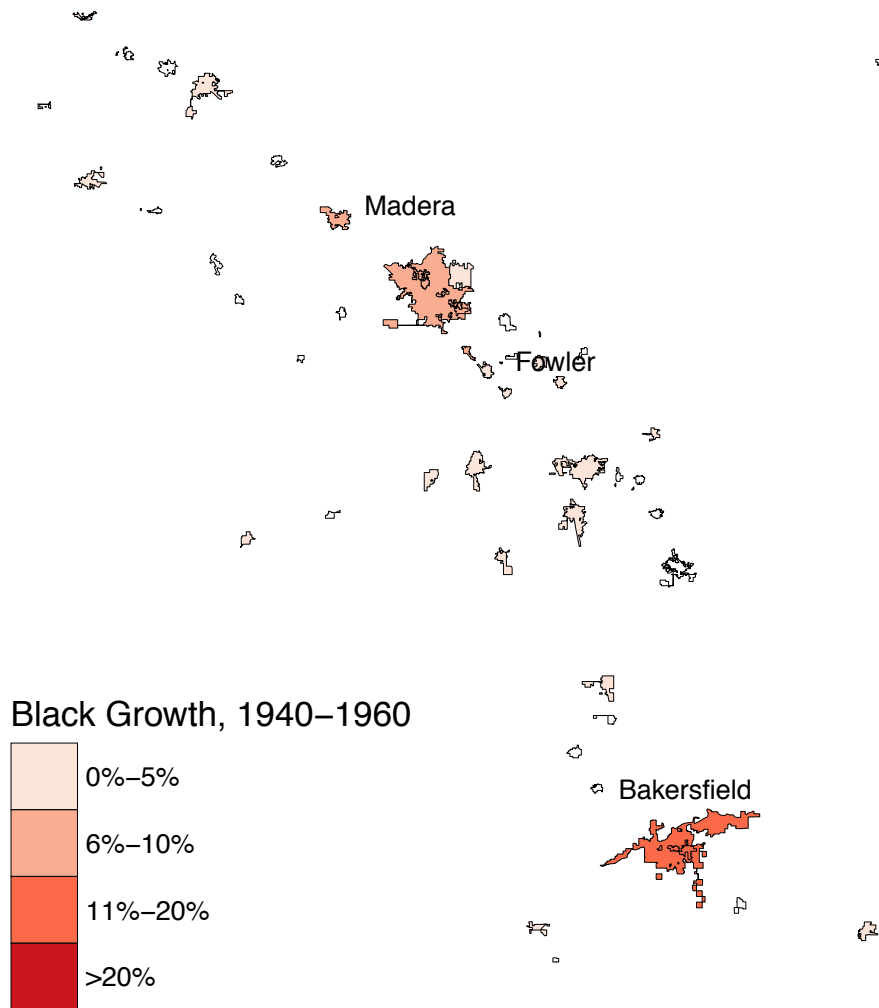
Figure L.1: Mean Levels of White Population Change As a Function of Proximity to Black Growth Cities



Note: Mean percentage point change in White population 1940-1960 conditional on proximity to Black growth city (98th percentile). White flight appears to largely be restricted to cities less than five miles from Black growth cities.

M. Additional Maps

Figure M.1: Map of Central Valley Black Growth Cities



Note: 95th percentile growth cities of Bakersfield, Fowler, and Madera in Central Valley.

Appendix N: Analysis with Various City Outlier Restrictions

Table N.1: Sample Restrictions by Varying Proximities

	Prop 14, 1964			
	(1)	(2)	(3)	(4)
Proximity	6.76*** (1.68)	13.12*** (3.63)	18.67*** (6.38)	34.43*** (8.76)
Median Income	-0.83 (0.94)	-1.17 (1.10)	-1.30 (1.34)	-0.89 (1.25)
Unemployment	-1.14 (31.87)	15.99 (54.31)	40.38 (59.28)	129.89 (82.16)
Homeownership	-6.60 (7.03)	-4.63 (7.56)	-1.44 (8.34)	0.99 (8.89)
Partisan Composition (%D)	0.04 (6.04)	-2.18 (6.62)	-5.82 (8.02)	-15.57* (9.11)
Population Density	0.01 (0.01)	0.01* (0.01)	0.02 (0.01)	0.02 (0.01)
Constant	82.28*** (8.10)	85.18*** (10.76)	85.61*** (12.78)	84.69*** (12.50)
N	179	158	148	134
R ²	0.09	0.11	0.13	0.18
Adjusted R ²	0.06	0.07	0.09	0.14
Residual Std. Error	9.77 (df = 172)	9.88 (df = 151)	10.03 (df = 141)	9.78 (df = 127)
F Statistic	2.76** (df = 6; 172)	2.99*** (df = 6; 151)	3.38*** (df = 6; 141)	4.69*** (df = 6; 127)

*Note: OLS coefficients and heteroskedastic robust standard errors in parentheses. All samples restricted to 90% or greater White cities. Results of further sample restrictions where we drop cities that are more than 200 miles away (column 1), 100 miles away (column 2), 75 miles away (column 3) and 50 miles away (column 4) from the nearest Black growth city. * $p < .1$; ** $p < .05$; *** $p < .01$ (two-tailed).*

Works Cited

- Acharya, Avidit, Matthew Blackwell, and Maya Sen. 2016. "The Political Legacy of American Slavery." *Journal of Politics* 78 (3): 621–41.
- Alexseev, Mikhail A. 2006. *Immigration Phobia and the Security Dilemma: Russia, Europe, and the United States*. Cambridge: Cambridge University Press.
- Branton, Regina P., and Bradford S. Jones. 2005. "Reexamining Racial Attitudes: The Conditional Relationship between Diversity and Socioeconomic Environment." *American Journal of Political Science* 49 (2): 359–72.
- Cain, Bruce, Jack Citrin, and Cara Wong. 2000. "Ethnic Context, Race Relations, and California Politics." San Francisco.
- Campbell, Andrea Louise, Cara Wong, and Jack Citrin. 2006. "'Racial Threat', Partisan Climate, and Direct Democracy: Contextual Effects in Three California Initiatives." *Political Behavior* 28 (2): 129–50.
- Carsey, Thomas M. 1995. "The Contextual Effects of Race on White Voter Behavior: The 1989 New York City Mayoral Election." *The Journal of Politics* 57 (1): 221.
- Cho, Wendy K.T., and Neil Baer. 2011. "Environmental Determinants of Racial Attitudes Redux: The Critical Decisions Related to Operationalizing Context." *American Politics Research* 39 (2): 414–36.
- Clark, William A. V. 1992. "Residential Preferences and Residential Choices in a Multiethnic Context." *Demography* 29 (3): 451–66.
- Enos, Ryan D. 2014. "Causal Effect of Intergroup Contact on Exclusionary Attitudes." *Proceedings of the National Academy of Sciences* 111 (10): 3699–3704.
- . 2016. "What the Demolition of Public Housing Teaches Us about the Impact of Racial Threat on Political Behavior." *American Journal of Political Science* 60 (1): 123–42.
- . 2017. *The Space Between Us: Social Geography and Politics*. Cambridge: Cambridge University Press.
- Enos, Ryan D., and Noam Gidron. 2016. "Intergroup Behavioral Strategies as Contextually Determined: Experimental Evidence from Israel." *The Journal of Politics* 78 (3): 851–67.
- Fetzer, Joel S. 2000. *Public Attitudes Toward Immigration in the United States, France, and Germany*. Cambridge University Press.
- Fox, Cybelle. 2004. "The Changing Color of Welfare? How Whites' Attitudes toward Latinos Influence Support for Welfare." *American Journal of Sociology* 110 (3): 580–625.
- Gaines, Brian J, Wendy K Tam Cho, and K Tarn. 2004. "On California's 1920 Alien Land Law: The Psychology and Economics of Racial Discrimination." *State Politics & Policy Quarterly* 4 (3): 271–93.
- Gay, Claudine. 2006. "Seeing Difference: The Effect of Economic Disparity on Black Attitudes Toward Latinos." *American Journal of Political Science* 50 (4): 982–97.
- Giles, Michael, and Kaenan Hertz. 1994. "Racial Threat and Partisan Identification." *American Political Science Review* 88 (2): 317–26.
- Giles, Micheal W, and Melanie A Buckner. 1993. "David Duke and the Black Threat: An Old Hypothesis Revisited." *Journal of Politics* 55 (3): 702–13.
- Green, Donald P., Dara Z. Strolovitch, and Janelle S. Wong. 1998. "Defended Neighborhoods, Integration, and Racially Motivated Crime." *American Journal of Sociology* 104 (2): 372–403.
- Hero, Rodney, and Robert Preuhs. 2007. "Immigration and the Evolving American Welfare

- State: Examining Policies in the US States.” *American Journal of Political Science* 51 (3): 498–517.
- Hopkins, Daniel. 2009. “The Diversity Discount: When Increasing Ethnic and Racial Diversity Prevents Tax Increases.” *Journal of Politics* 71 (1): 160–77.
- . 2010. “Politicized Places: Explaining Where and When Immigrants Provoke Local Opposition.” *American Political Science Review* 104 (1): 40–60.
- . 2012. “Flooded Communities.” *Political Research Quarterly* 65 (2): 443–59.
- . 2013. “Misplaced: The Limits of Contextual Influence on Americans’ Political Attitudes.”
- HoSang, Daniel. 2010. *Racial Propositions: Ballot Initiatives and the Making of Postwar California*. Berkeley Calif.: University of California Press.
- Key, V. O. 1949. *Southern Politics: In State and Nation*. Vintage Books.
- King, Gary. 1997. *A Solution to the Ecological Inference Problem: Reconstructing Individual Behavior from Aggregate Data*. Princeton, NJ: Princeton University Press.
- Leighley, Jan, and Jonathan Nagler. 1992. “Individual and Systemic Influences on Turnout: Who Votes? 1984.” *Journal of Politics* 54 (3): 718–40.
- Leighley, Jan, and Arnold Vedlitz. 1999. “Race, Ethnicity, and Political Participation: Competing Models and Contrasting Explanations.” *Journal of Politics* 61 (4): 1092–1114.
- Mummolo, Jonathan, and Clayton Nall. 2017. “Why Partisans Do Not Sort: The Constraints on Political Segregation.” *Journal of Politics* 79 (1): 45–59.
- Nall, Clayton, Benjamin Schneer, and Daniel Carpenter. 2018. “Paths of Recruitment: Rational Social Prospecting in Petition Canvassing.” *American Journal of Political Science* 62 (1): 192–209.
- Newman, Benjamin J. 2013. “Acculturating Contexts and Anglo Opposition to Immigration in the United States.” *American Journal of Political Science* 57 (2): 374–90.
- Newman, Benjamin J., and Yamil Velez. 2014. “Group Size versus Change? Assessing Americans’ Perception of Local Immigration.” *Political Research Quarterly* 67 (2): 293–303.
- Oliver, J. Eric. 2010. *The Paradoxes of Integration: Race, Neighborhood and Civic Life in Multiethnic America*. Chicago, Ill: University of Chicago Press.
- Oliver, J. Eric, and Tali Mendelberg. 2000. “Reconsidering the Environmental Determinants of White Racial Attitudes.” *American Journal of Political Science* 44 (3): 574–89.
- Oliver, J. Eric, and Janelle Wong. 2003. “Intergroup Prejudice in Multiethnic Settings.” *American Journal of Political Science* 47 (4): 567.
- Openshaw, Stan, and Peter Taylor. 1979. “A Million or So Correlation Coefficients: Three Experiments on the Modifiable Areal Unit Problem.” In *Statistical Applications in the Spatial Sciences*, edited by N. Wrigley. London: Pion.
- Putnam, Robert D. 2007. “E Pluribus Unum: Diversity and Community in the 21st Century: The 2006 Johan Skytte Prize Lecture.” *Scandinavian Political Studies* 30 (2): 137–74.
- Rocha, R. R., and R. Espino. 2009. “Racial Threat, Residential Segregation, and the Policy Attitudes of Anglos.” *Political Research Quarterly* 62: 415–26.
- Rothstein, Richard. 2017. *The Color of Law: A Forgotten History of How Our Government Segregated America*. London, U.K.: Liverlight Publishing Corporation.
- Sampson, Robert J. 2008. “Moving to Inequality: Neighborhood Effects and Experiments Meet Social Structure.” *American Journal of Sociology* 114 (1): 189–231.
- Tam Cho, Wendy K., James G. Gimpel, and Iris S. Hui. 2013. “Voter Migration and the

- Geographic Sorting of the American Electorate.” *Annals of the Association of American Geographers* 103 (4): 856–70.
- Tolbert, Caroline J., and John a. Grummel. 2003. “The Racial Threat Hypothesis: Revisiting White Support for California’s Proposition.” *State Politics and Policy Quarterly* 3 (2): 183–202.
- Voss, D Stephen. 1996. “Beyond Racial Threat: Failure of an Old Hypothesis in the New South.” *The Journal of Politics* 58 (4): 1156.
- Welch, Susan, Lee Sigelman, Timothy Bledsoe, and Michael Combs. 2001. *Race and Place Race Relations in an American City*. Cambridge: Cambridge University Press.
- Yule, G. Udny, and M.G. Kendall. 1950. *An Introduction to the Theory of Statistics*. London, U.K.: C. Griffin.